

Table of Contents

Uninstalling the old wireless projector client i.e. Genesis Client.....	2
Installing the new wireless projector client (Windows Client)	2
Installing the new wireless projector client (Mac Client)	7
How to use the new Wireless Projector Client	10
Using the new Multimedia Player in Wireless Projector Client.....	11
How to upload multimedia media in offline mode.....	11
How to upload multimedia media in online mode.....	15
Annex A: Amendment History	19

Uninstalling the old wireless projector client i.e. Genesis Client

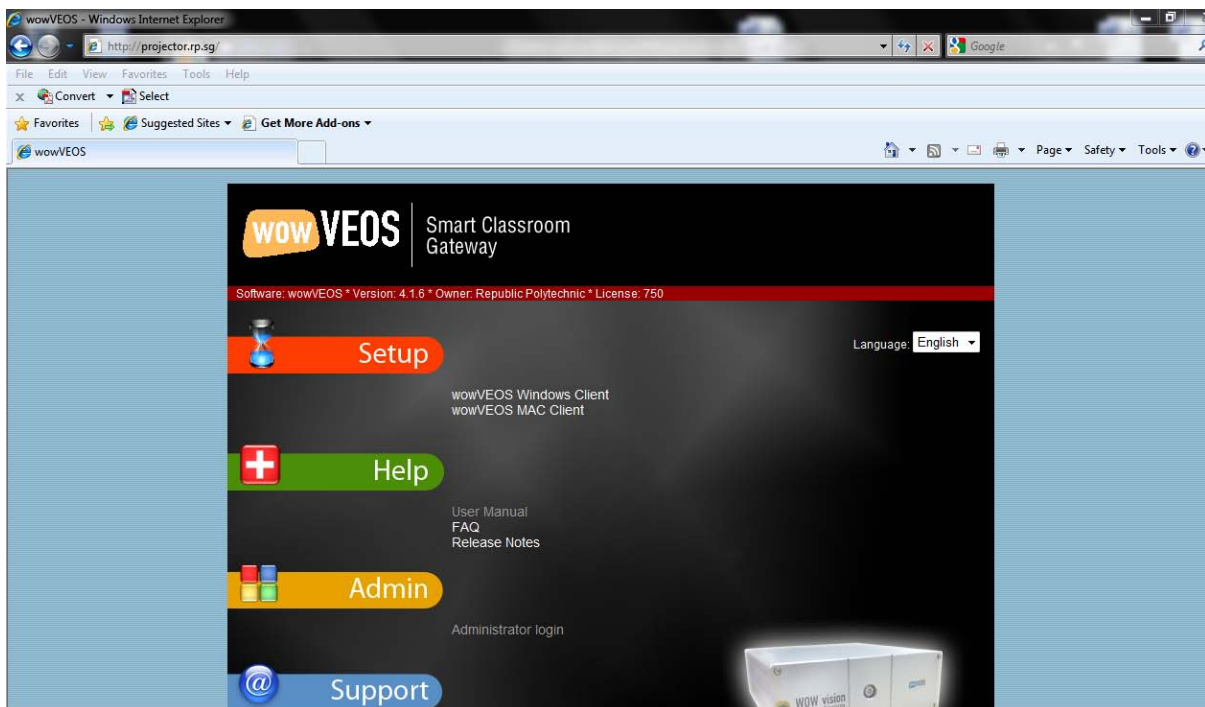
1. Go to Start -> All Programs -> Control Panel. Upon opening the Control Panel, double click on Add or Remove Programs (for Windows XP) or Programs and Features (for Windows Vista and 7).
2. Look for "Genesis Client" and then click on "Remove" or "Uninstall" to remove the software.



3. Restart your laptop once the removal process has completed.

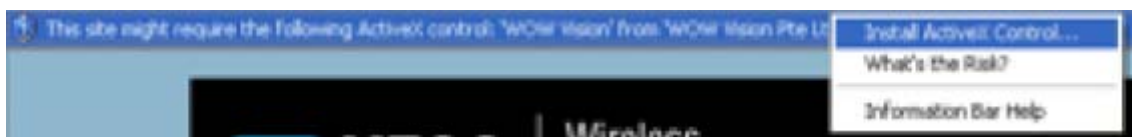
Installing the new wireless projector client (Windows Client)

1. Go to www.rp.sg/projector. You will be directed to the below website.

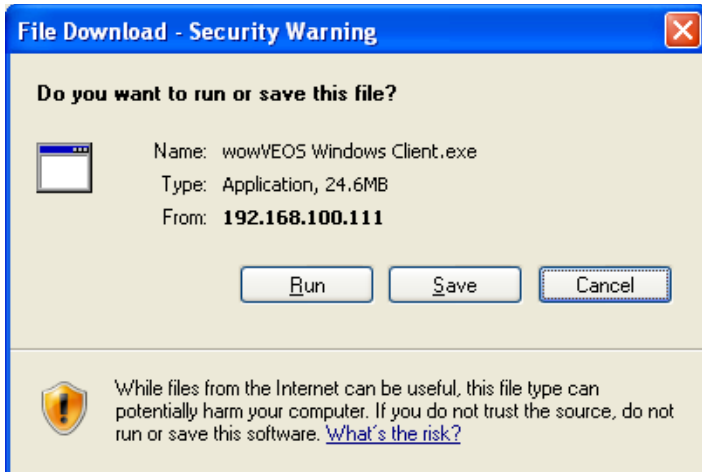


2. Click on the Windows Client. For Mac users, please click on the Mac Client (see Mac installation guide below).

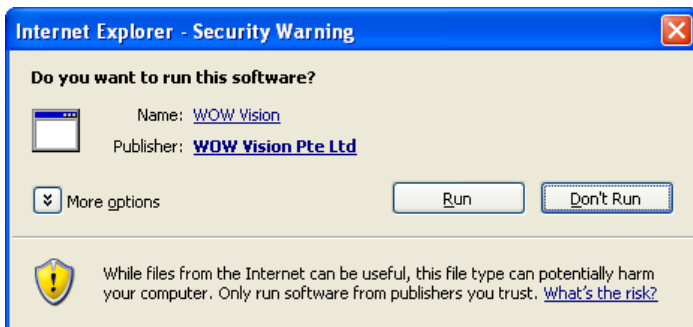
3. In most default Internet Explorer configurations, the security level is set in such a way that it will display a security warning whenever a web site attempts to install and run an unknown ActiveX control. A bar at the top of the web page will appear, prompting you to click it. Click on the bar and a context menu will pop up. Click on "Install ActiveX Control" to allow the installation to proceed.



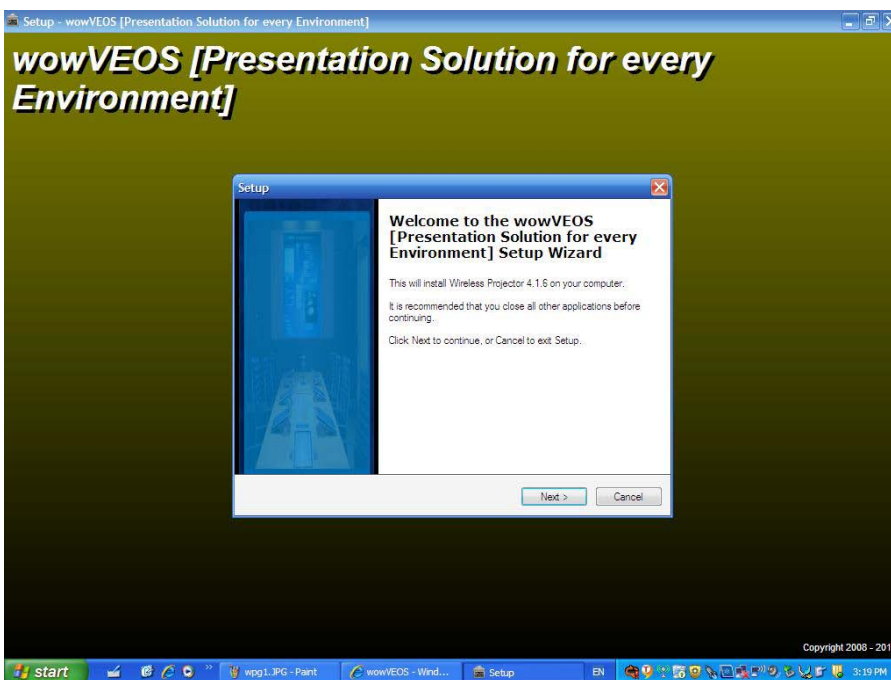
4. Internet Explorer will attempt to download an installer file to your computer.



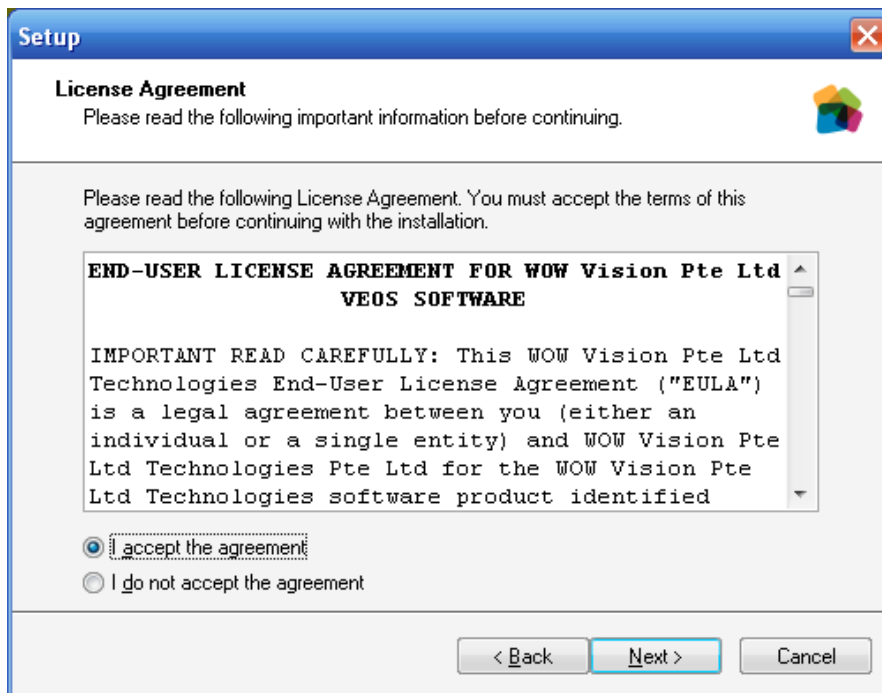
5. Click on the Run button. Internet Explorer will download the installer to a temporary area on your laptop and automatically run it to begin the installation process. Before the installation can proceed, Internet Explorer will display another security warning for your confirmation.



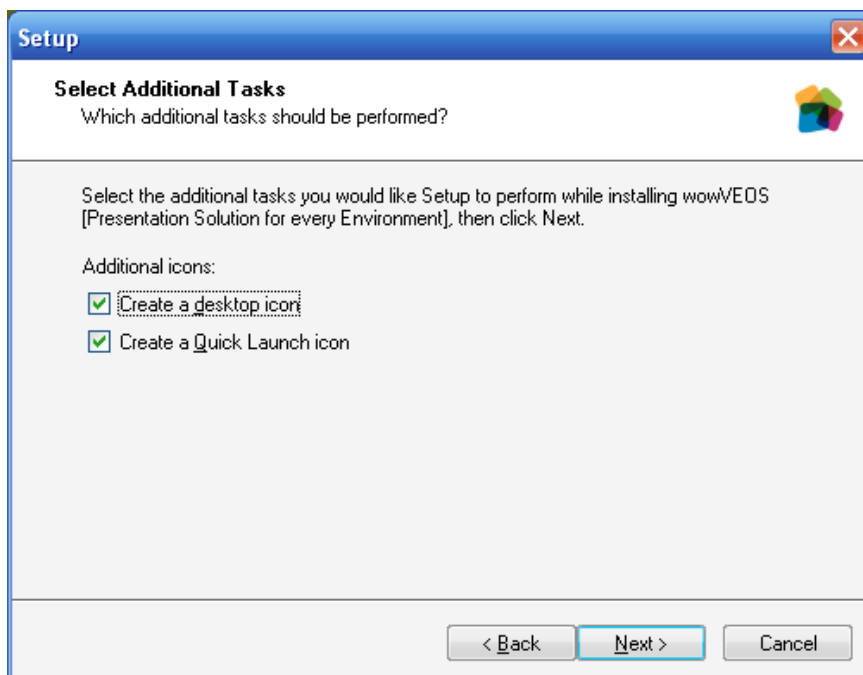
6. Click on the Next button to begin the installation process.



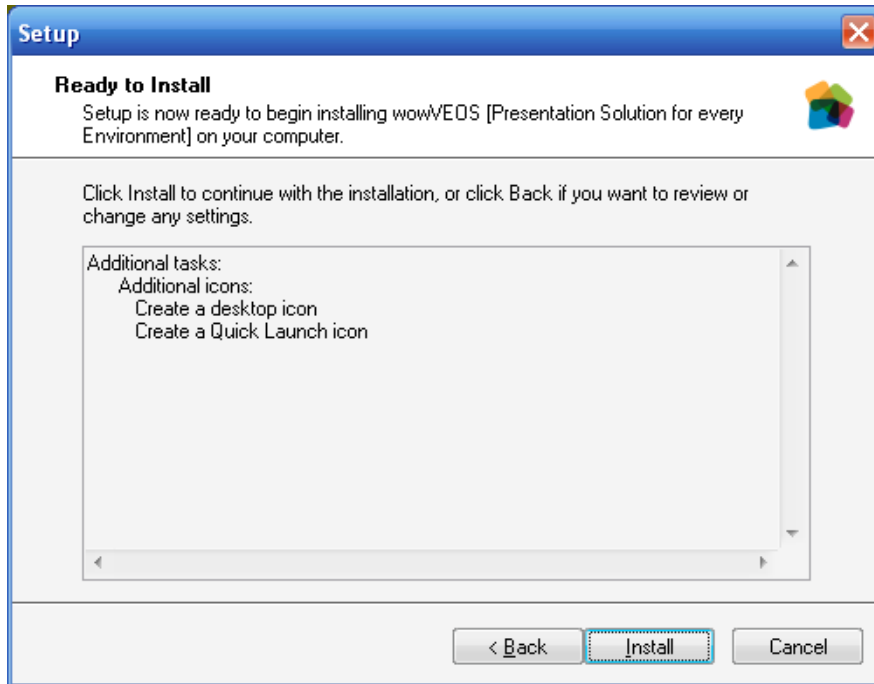
7. Tick on "I accept the agreement" and click on Next.



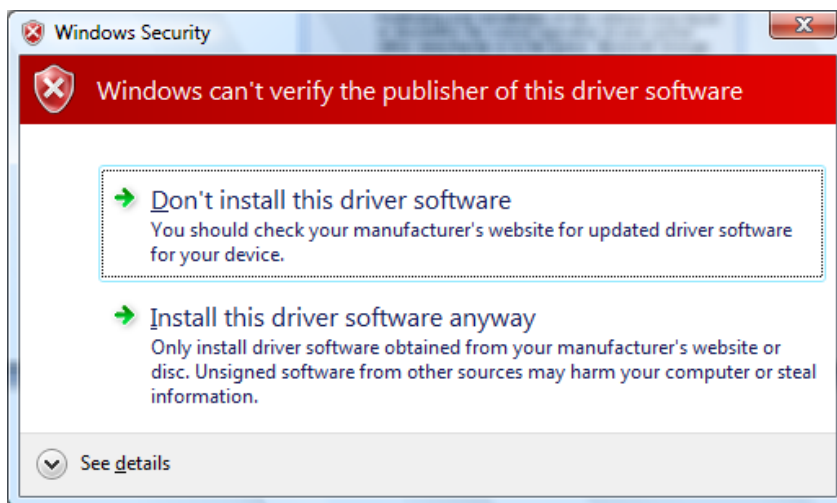
8. Select the checkboxes if you wish to install additional shortcut icons to start the Wireless Projector software from the desktop or Quick Launch bar. Click Next to continue.



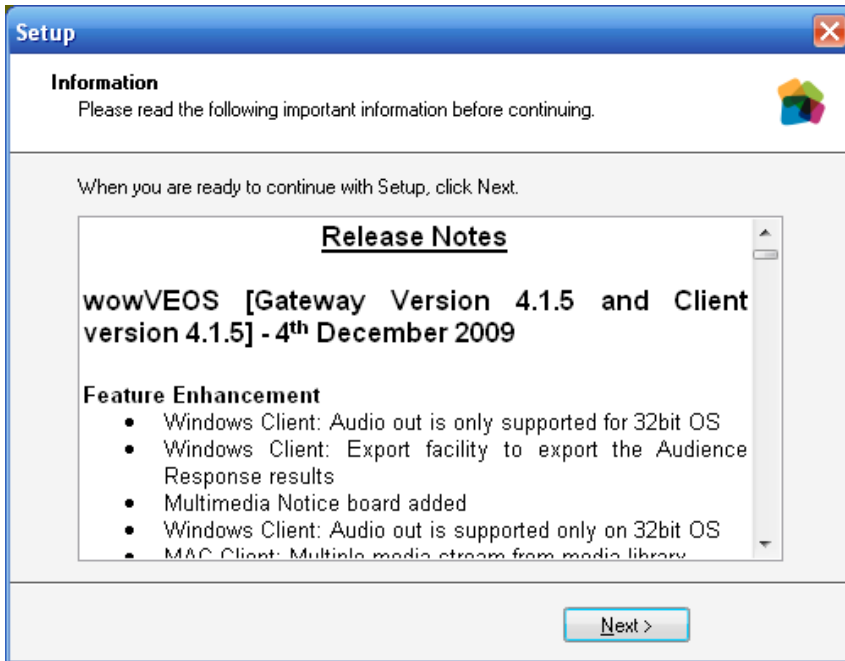
9. A summary of the actions to be performed during the installation process is shown next.



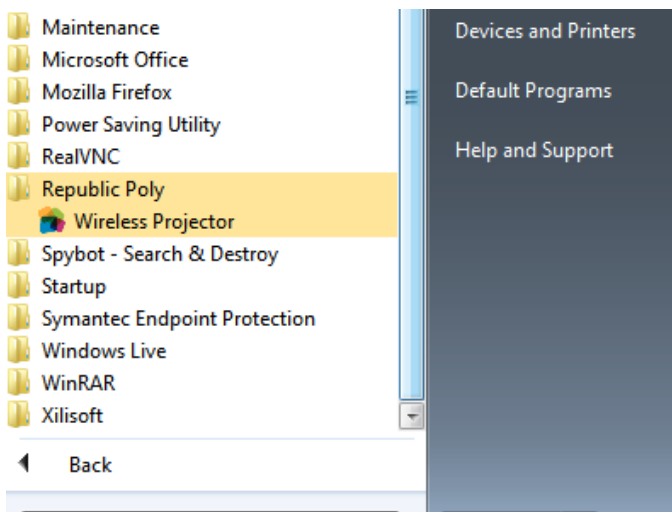
10. Click Install to begin the installation. A hardware driver will be installed in Windows to allow the software to make presentations. During the installation, you may encounter the below message. Click on "Continue Anyway" (for Windows XP) or "Install this driver software anyway" (Windows Vista and 7) to proceed.



11. Once the installation is completed, the release notes will be displayed. Click on Next to continue. You should be prompted to restart your laptop for the new Wireless Projector client to work.

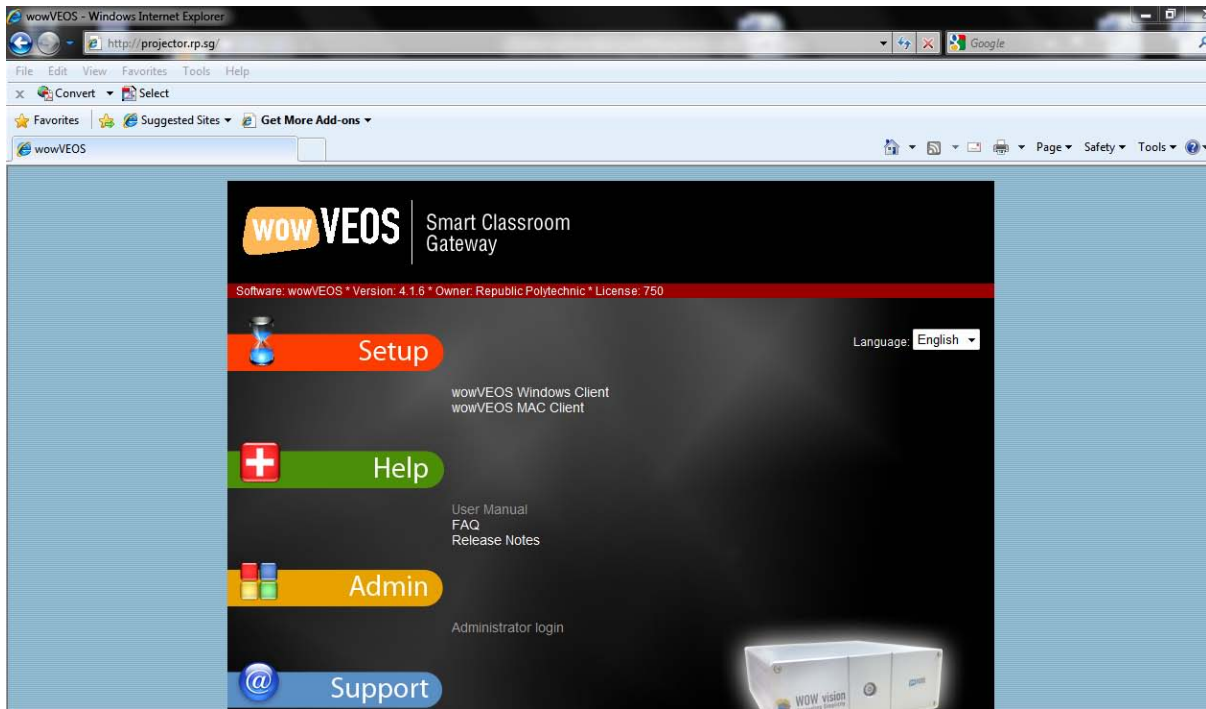


12. After the reboot of the laptop, there should be a new Wireless Projector icon on your desktop. You can also find the new Wireless Projector client at Start -> All Programs -> Republic Poly -> Wireless Projector.



Installing the new wireless projector client (Mac Client)

1. Go to www.rp.sg/projector. You will be directed to the below website.

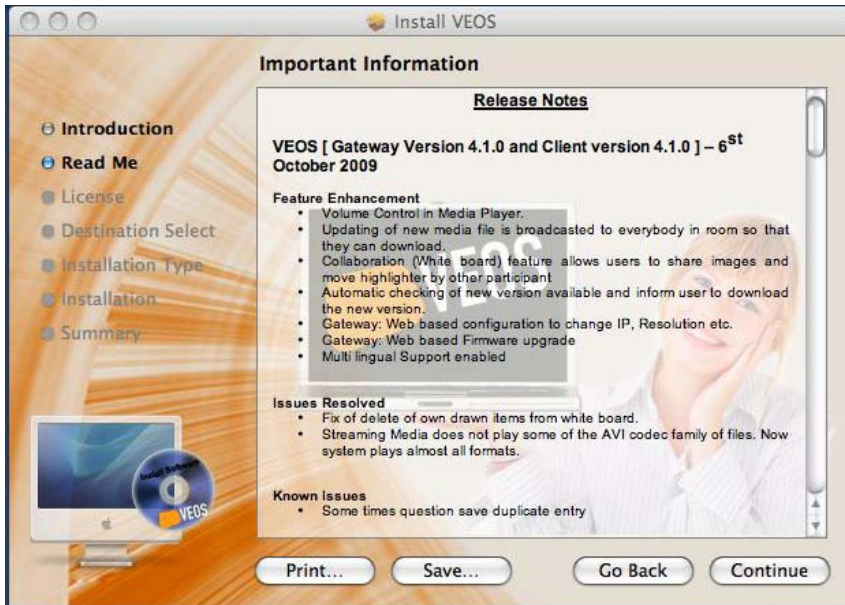


2. Click on the Mac Client. The browser will download an installation package file to the default download location configured in the browser.

3. If the browser is configured to open downloaded files, the installer will start automatically. Otherwise, locate the downloaded installation package and open it. The installer will display an introduction.



4. Click Continue to begin the installation. You will be asked to input the credentials of an administrator account. Once the credentials are entered correctly, the installation will proceed. When the installation has completed, a summary will be shown.



5. Click Continue to complete the installation. After installation, the Wireless Projector software will be available in the Applications folder. Open the application and you will be prompted to select the location of the Wireless Projector gateway. Enter **RP** as the Location and **172.16.0.13** as the IP address.

6. Check on the location of Wireless Projector and click the Save button. Next, provide participant credentials to gain access to the Wireless Projector gateway (Please kindly send an email to help-wifiprojector@rp.sg for the additional credentials required as Intel Mac does not support Microsoft Active Directory).



7. Once the software has successfully connected to the Wireless Projector gateway, choose the room to join for presentation.



8. Upon joining the specified room, the main window will be displayed as shown below.



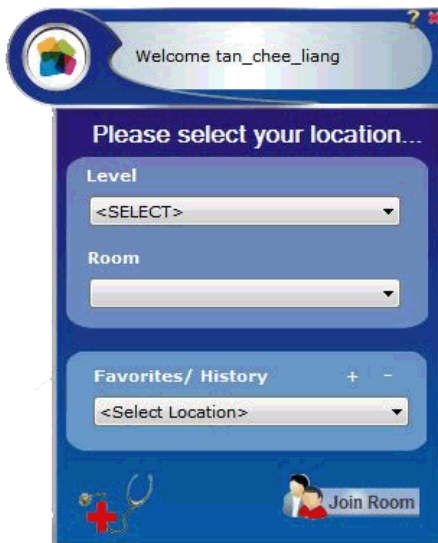
How to use the new Wireless Projector Client

1. Double click on the Wireless Projector icon on your laptop's desktop to launch the application or go to Start -> All Programs -> Republic Poly -> Wireless Projector to launch the new client.

Note: Please allow all traffics to pass through the windows firewall if you are prompted upon launching the Wireless Projector client for the first time.



2. Select the location where you want to display and click on Join Room.



3. You should see the below interface. To present, please click on "Display Me".



4. Do drop us an email at help-it@rp.sg if you are having any issues with the installation of the new wireless projector software or have any feedback regarding the new wireless projector software. Thanks.

Using the new Multimedia Player in Wireless Projector Client

It is recommended that users upload their video files onto the Wireless Projector system instead of playing directly from the laptop for faster and smoother projection.

Note: All multimedia files uploaded into the Wireless Projector system will be deleted at the end of each seminar as part of the maintenance process.

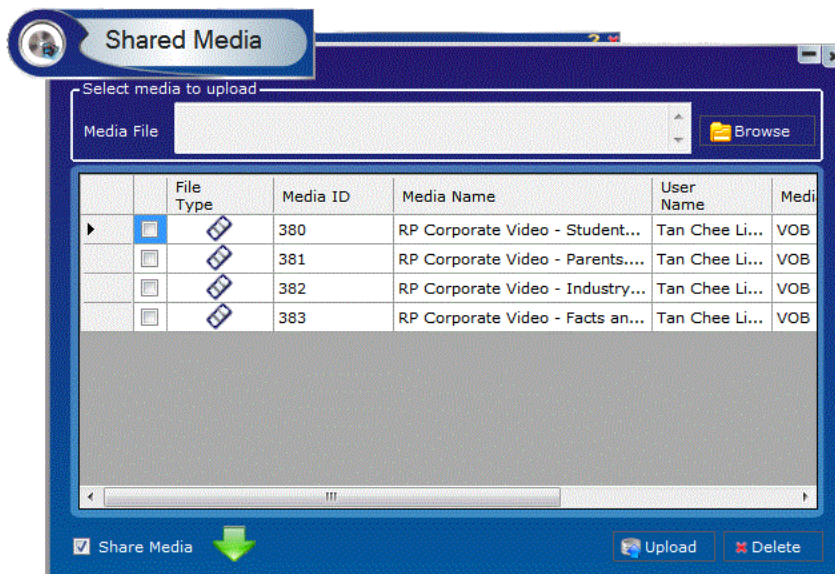
There are 2 methods where one can upload the media onto the Wireless Projector system, online and offline mode.

How to upload multimedia media in offline mode

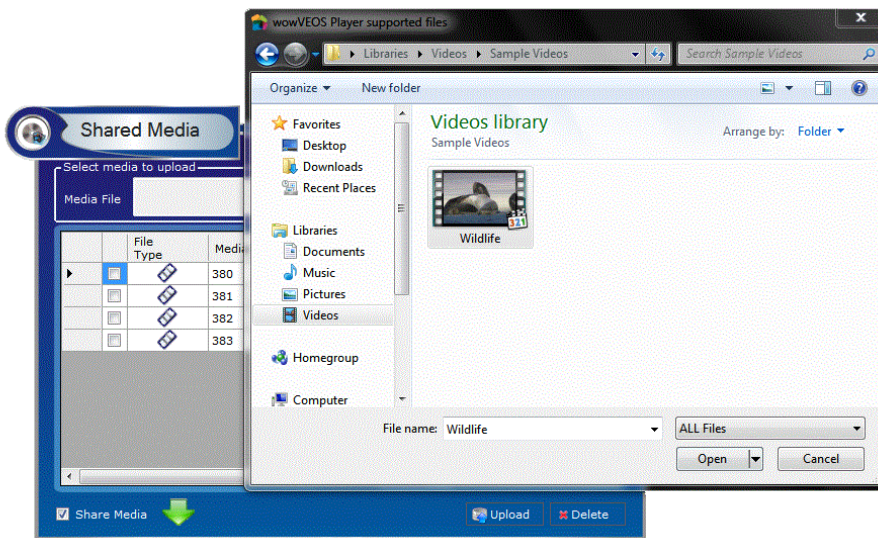
1. Double click on the Wireless Projector icon on your laptop's desktop to launch the application or go to Start -> All Programs -> Republic Poly -> Wireless Projector to launch the new client. You should notice the Wireless Projector icon on the taskbar.



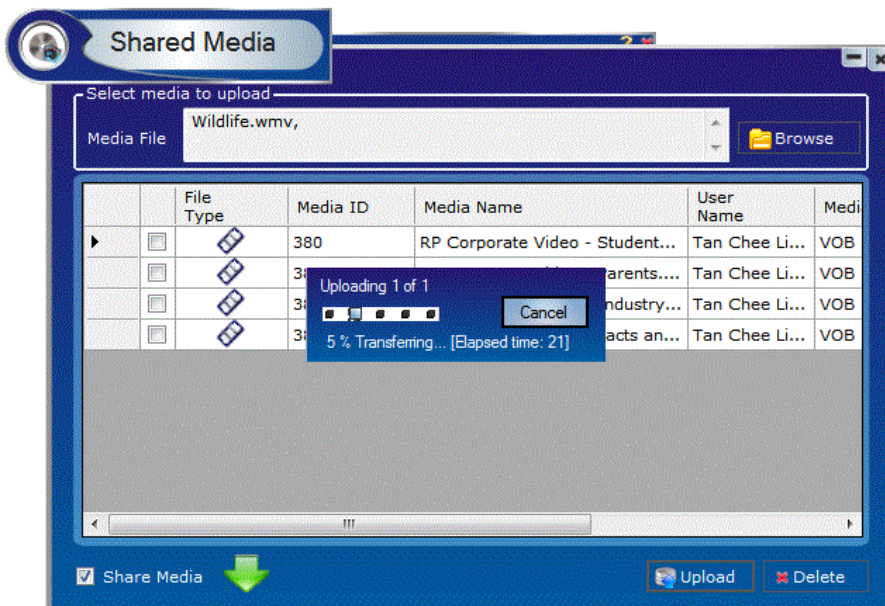
2. Right click on the Wireless Projector icon and select "Shared Media". You should see the below screenshot.



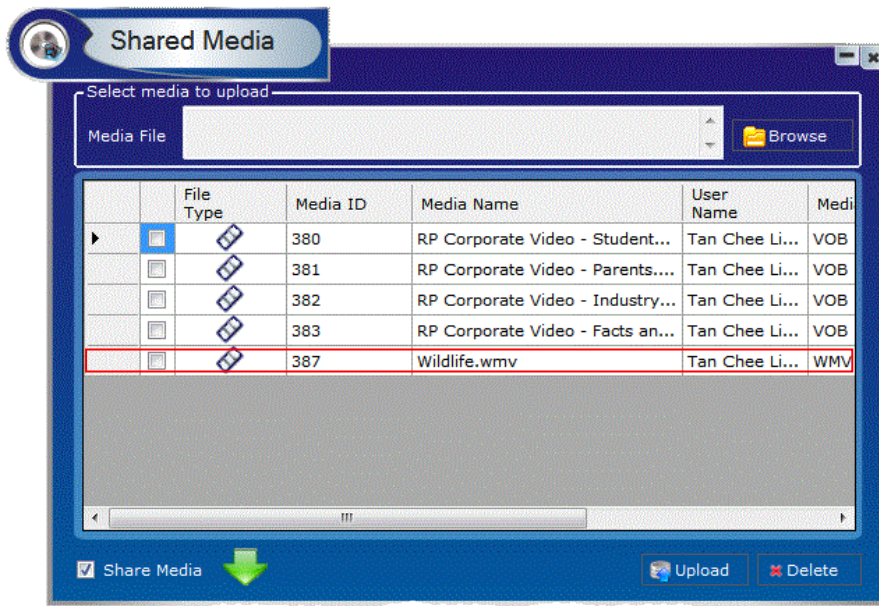
3. Click on "Browse" to select the video file that you wish to upload to the Wireless Projector system. Once done, please click on "Open".



4. Once the above step is done, please click on “Upload” to upload the file to the Shared Media. The file should start uploading now.



5. Once the uploading has completed, you should see your video file in the Shared Media.



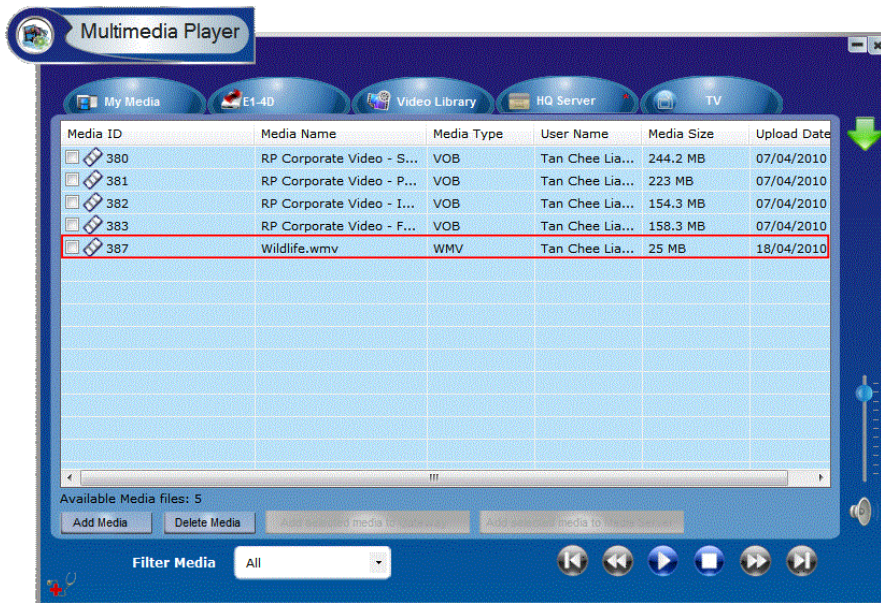
6. To play the video file during lessons, simply login to the room where you want to display and click on "Multimedia" on the Wireless Projector client.



7. Once the Multimedia button is clicked on, the below screen should appear.



8. To access your uploaded video file, simply click on the “HQ Server” tab. You should see your video file now.



9. To start playing your video file, tick on the video file and click on the Play button. The video file should start playing on the projector screen now.

How to upload multimedia media in online mode

1. Double click on the Wireless Projector icon on your laptop's desktop to launch the application or go to Start -> All Programs -> Republic Poly -> Wireless Projector to launch the new client.
2. Login to the room where you want to display the video and click on "Multimedia" on the Wireless Projector client.



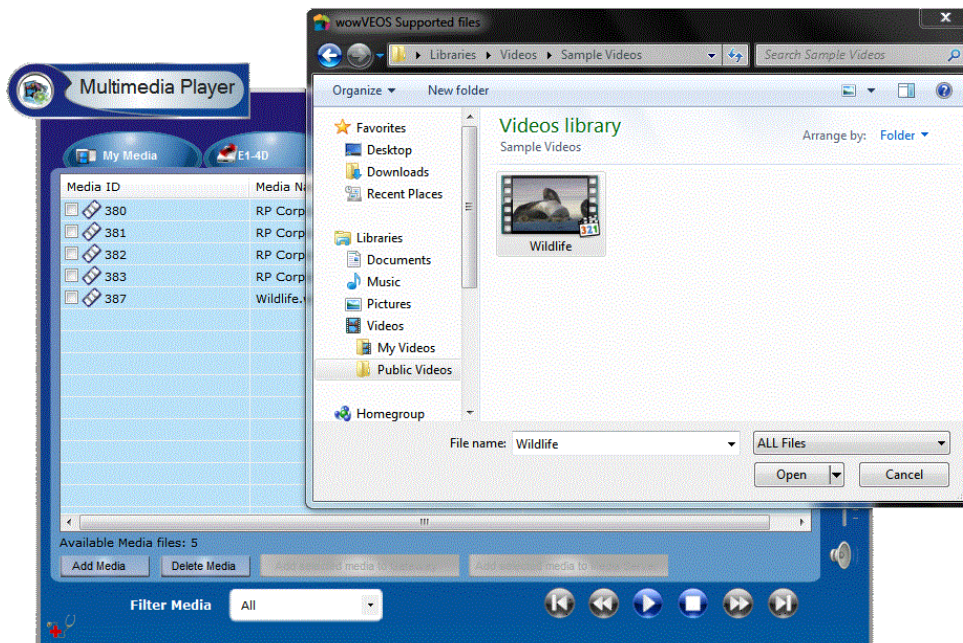
3. Once the Multimedia button is pressed on, the below screen should appear.



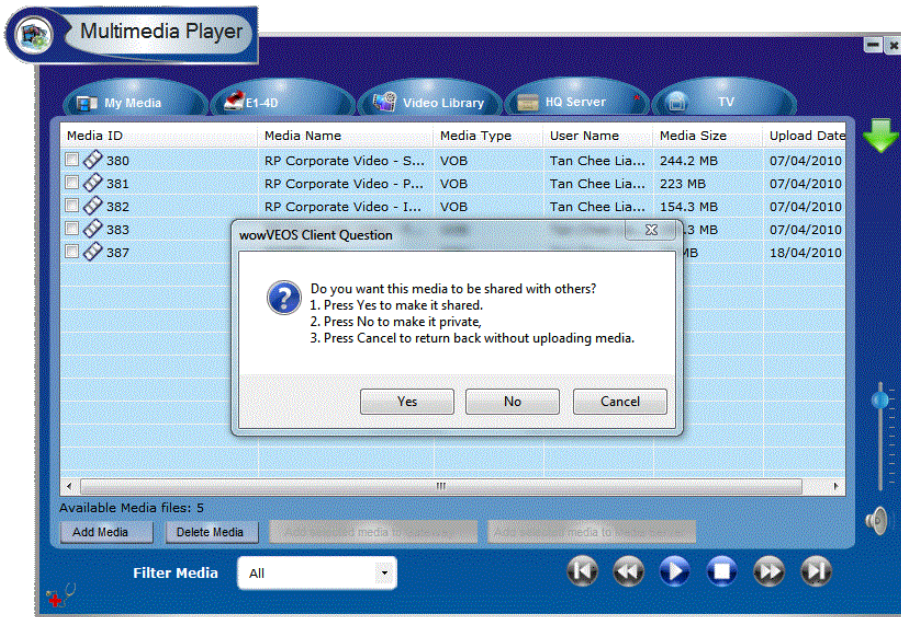
4. Click on the "HQ Server" tab. You should see the below screenshot.



5. To upload your video file, click on “Add Media”. You should be prompted to browse to the location where you have stored your video file on your laptop.



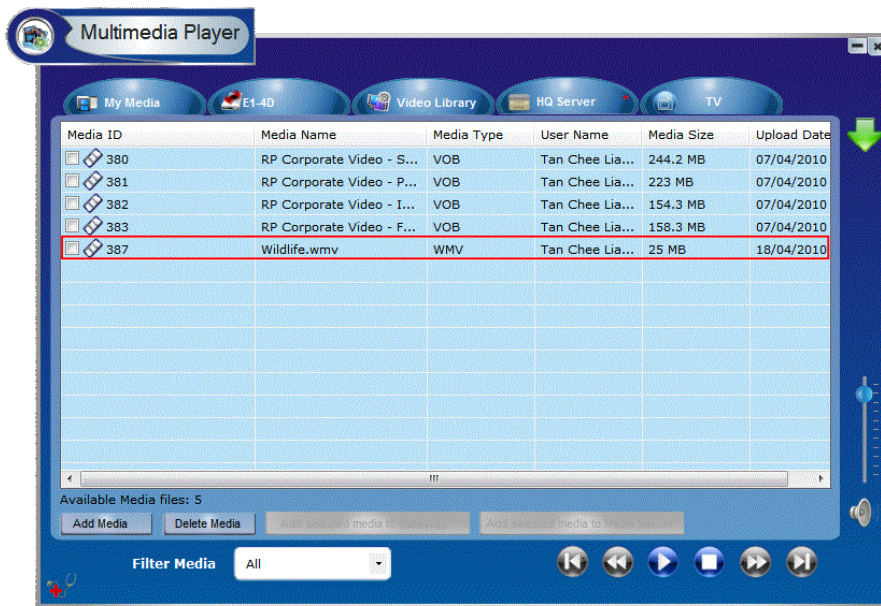
6. Once the video file has been selected, click on “Open”. The below screenshot should appear. Simply click on “Yes” to start uploading the video file.



7. Once the above step is done, the file should start uploading now.



8. Once the uploading has completed, you should see your video file in the Multimedia Player.



9. To play your video file, tick on the video file and click on the Play button. The video file should start playing on the projector screen now.

Annex A: Amendment History

S/No.	Amendment Description	Rev No.	Effective Date (dd/mm/yyyy)
1.	Draft Issue	00	14/04/2010
2.	Addition of multimedia player feature (offline and online mode) in user manual	01	18/04/2010